

Scanner Driver Installation Instructions

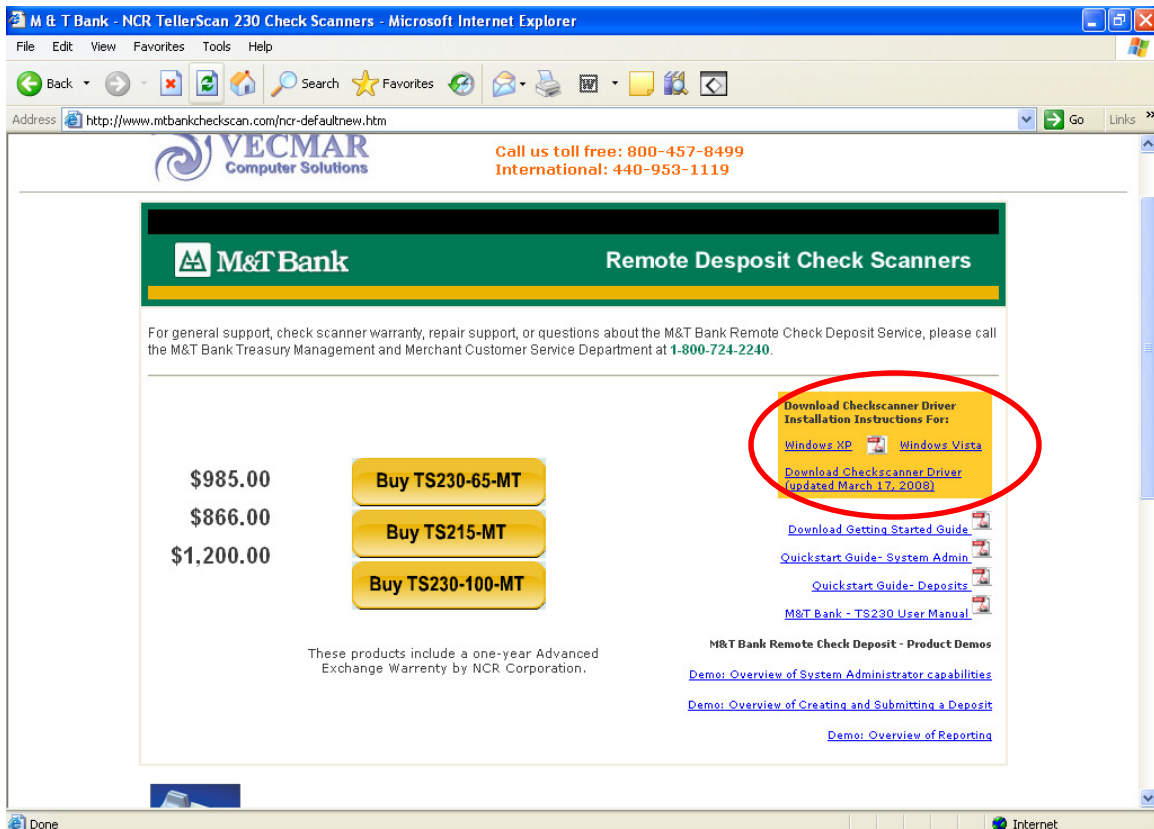
Scanners Supported - Digital Check TS215, TS230-65 and TS230-100
Operating System - Microsoft Windows XP

The following instructions will guide you through the installation process for the updated driver for your Digital Check scanner, to be used with the Windows XP operating system.

Prior to installing the driver, you should close all programs, **as you will be required to restart/reboot your PC after driver installation.**

- 1) As shown below, go to www.mtbankcheckscan.com to obtain the driver for download. You will need to enter generic Username **mtbank** and Password **rcd123** for access to this site.

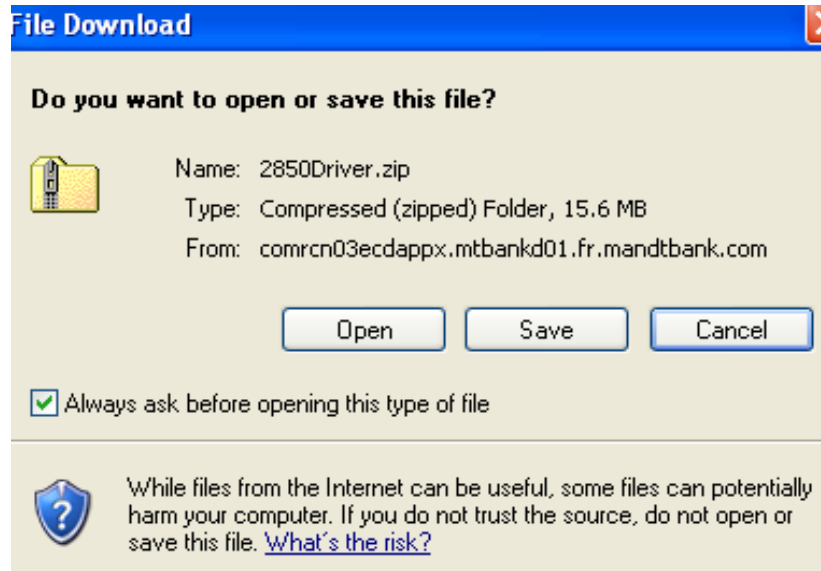
Click on **Download Check Scanner Driver**



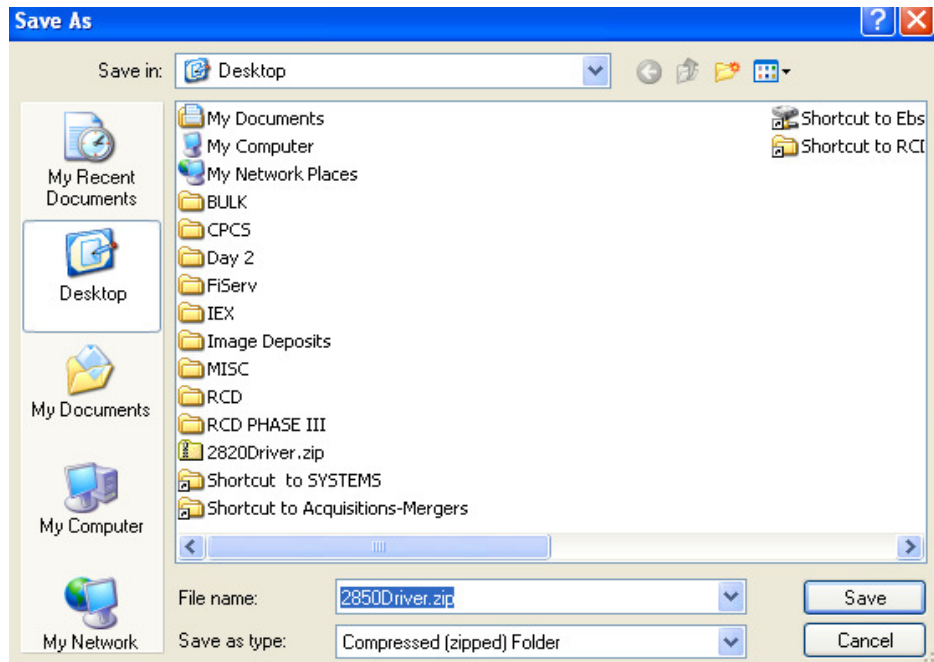
The screenshot shows a Microsoft Internet Explorer browser window displaying the M&T Bank website. The page title is "M & T Bank - NCR TellerScan 230 Check Scanners - Microsoft Internet Explorer". The address bar shows "http://www.mtbankcheckscan.com/ncr-defaultnew.htm". The page features the M&T Bank logo and the heading "Remote Deposit Check Scanners". Below the heading, there is a section for purchasing scanners with prices and "Buy" buttons for "Buy TS230-65-MT" (\$985.00), "Buy TS215-MT" (\$866.00), and "Buy TS230-100-MT" (\$1,200.00). A red circle highlights a yellow box containing the text "Download Check Scanner Driver Installation Instructions For:" followed by links for "Windows XP" and "Windows Vista", and a link for "Download Check Scanner Driver (updated March 17, 2008)". Other links include "Download Getting Started Guide", "Quickstart Guide - System Admin", "Quickstart Guide - Deposits", and "M&T Bank - TS230 User Manual".

Questions?
Contact M&T Bank Treasury Management and Merchant Customer Service
1-800-724-2240

2) A download box will appear. Click on **Save**



3) Save the file (TS230 Scanner-Driver-V1.2) to the directory of your choice.

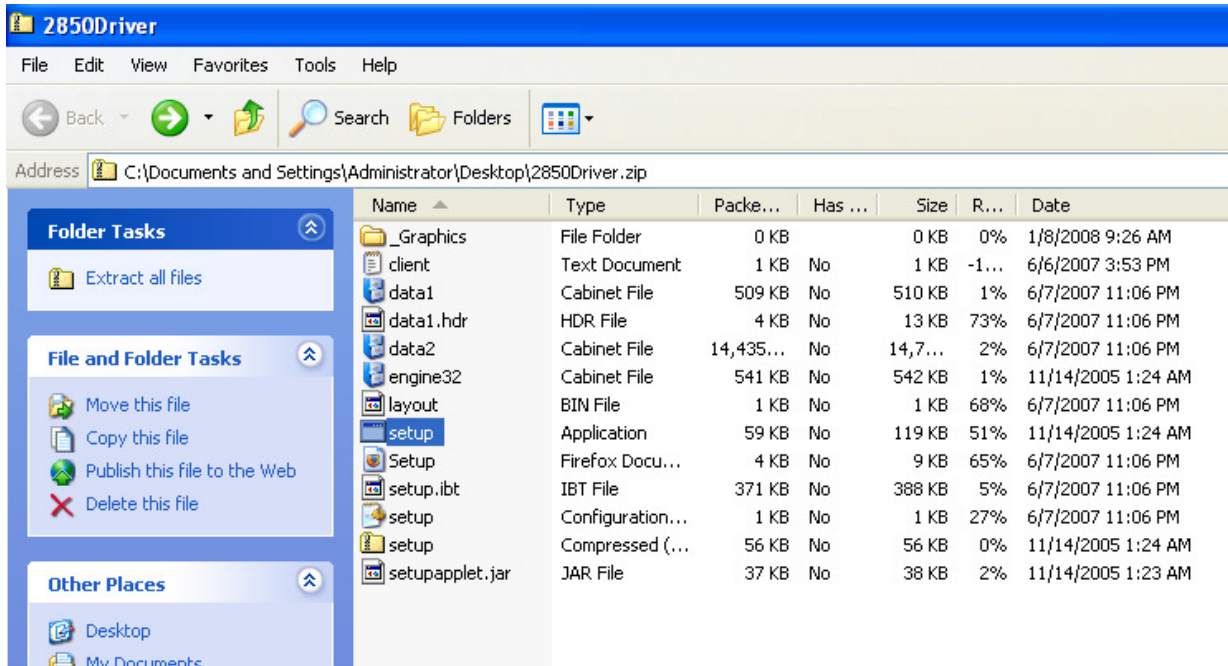


Questions?

Contact M&T Bank Treasury Management and Merchant Customer Service
1-800-724-2240

The following steps outline installation of the driver after it has been downloaded to the PC.

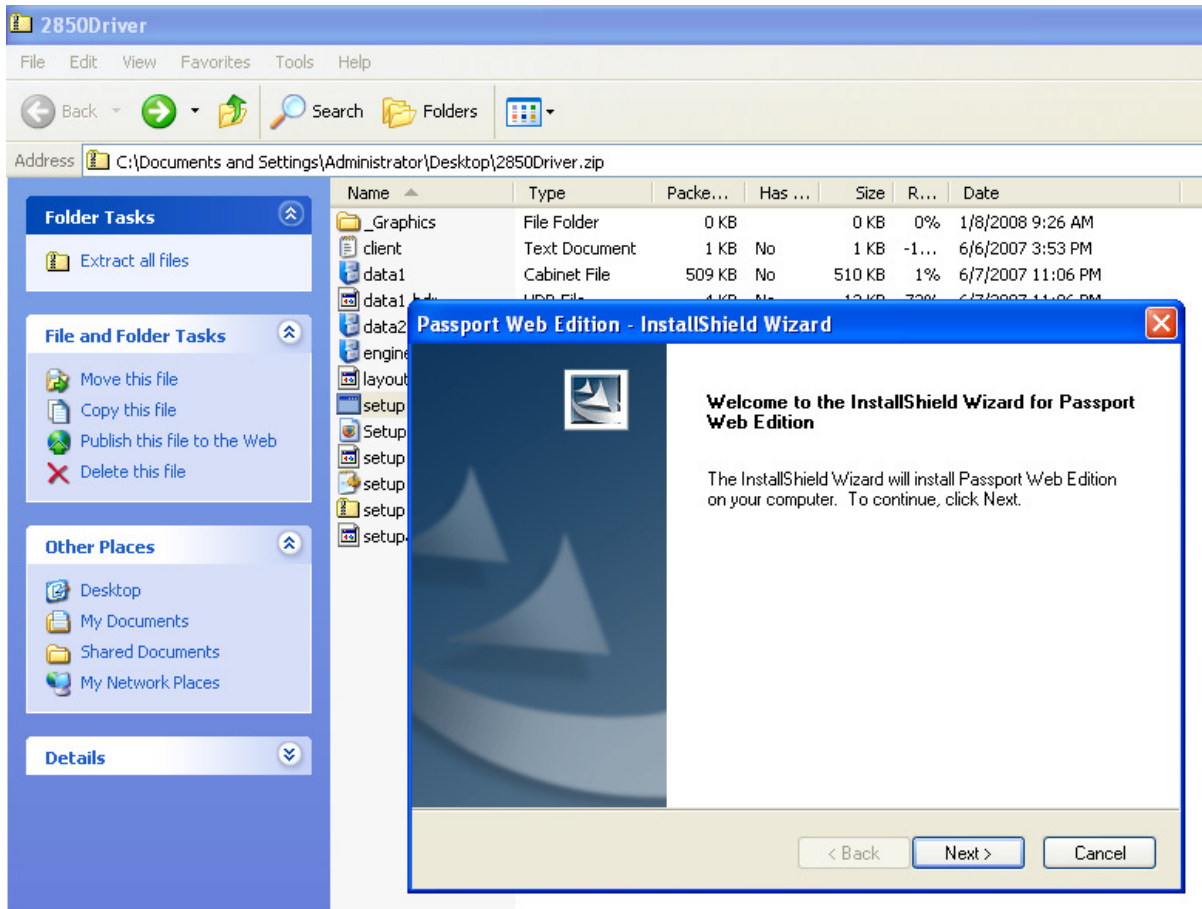
4) Open the “C:\M&T Bank Scanner-TS230” folder (default destination folder for unzipped driver files). Double click on the **setup.exe** icon. This will be the only ‘Application’ file in this folder.



Questions?

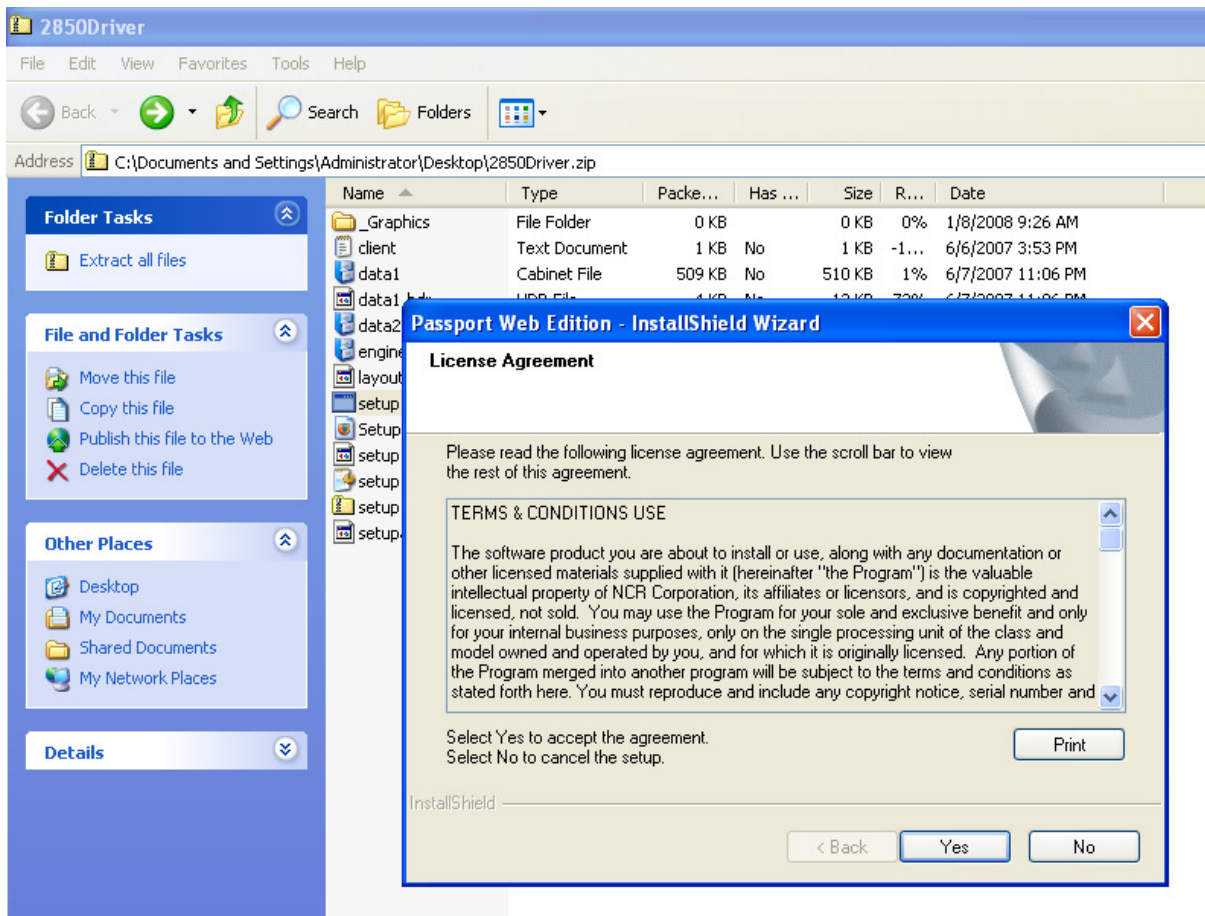
Contact M&T Bank Treasury Management and Merchant Customer Service
1-800-724-2240

2) Install Wizard will appear. Click **Next**



Questions?
Contact M&T Bank Treasury Management and Merchant Customer Service
1-800-724-2240

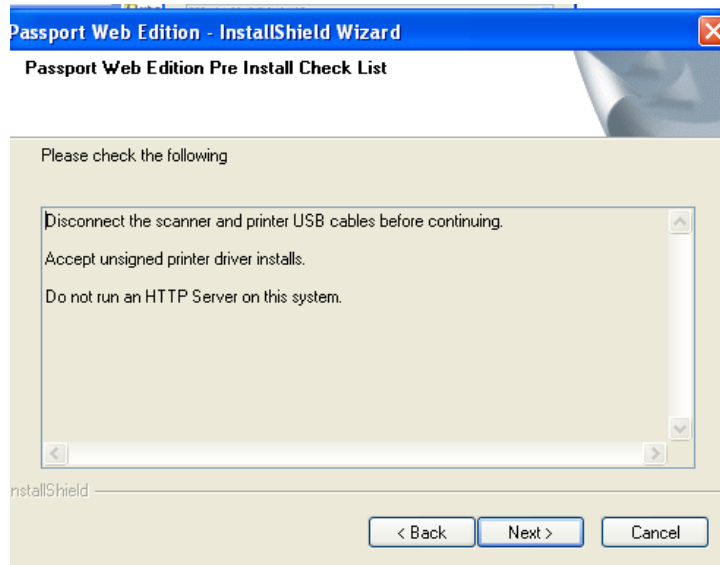
3) The license agreement will appear. Click **Yes**



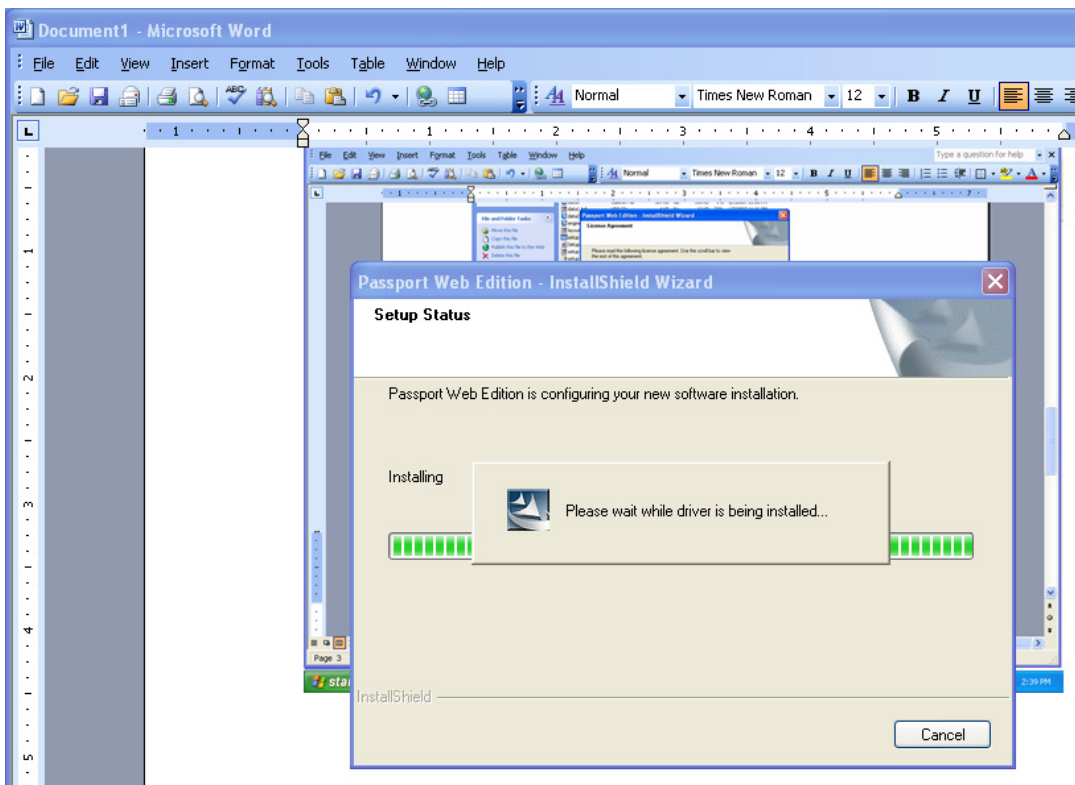
Questions?

Contact M&T Bank Treasury Management and Merchant Customer Service
1-800-724-2240

4) Ensure the scanner USB is disconnected from the PC. Click **Next**



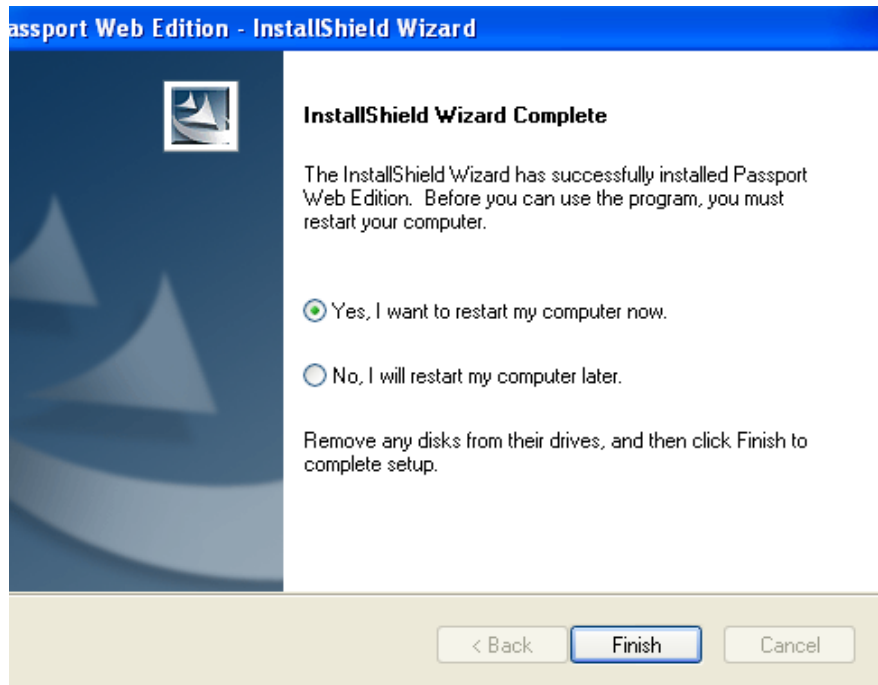
The driver will install, as shown below.



Questions?

Contact M&T Bank Treasury Management and Merchant Customer Service
1-800-724-2240

5) Once driver has completed installing, make sure the **Yes** option is selected and click **Finish** to reboot the PC.



6) Once the PC has restarted, plug the scanner USB cable into the PC and then log into Remote Check Deposit.

Once logged in, initiate a new deposit to ensure the driver file has properly installed:

- ✓ Create a new deposit
- ✓ Click **Start Capture** and wait until the scanner initialized (you will hear the motor turn and the screen will display “Loading...”)
- ✓ Insert checks into the hopper after “Loading...” disappears from the screen
- ✓ Items will scan

Smart Tip

To avoid scanner jams, remember to wait for the “Loading...” message to disappear from the screen before inserting the checks into the check hopper. While the “Loading...” screen is being displayed, the system is becoming ready to accept the checks.

7) **Installation of the updated Remote Check Deposit driver file is complete!**

Questions?

Contact M&T Bank Treasury Management and Merchant Customer Service
1-800-724-2240